

VALENTINE'S VICTORIAN PUZZLE PURSE

BACK



CUT ALONG EDGE

Watercolour HEART

FINE ART ILLUSTRATION & DESIGN

VALENTINE'S VICTORIAN PUZZLE PURSE

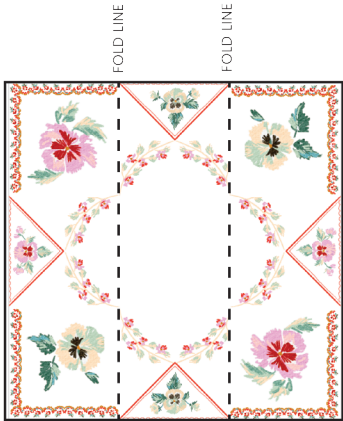
FRONT



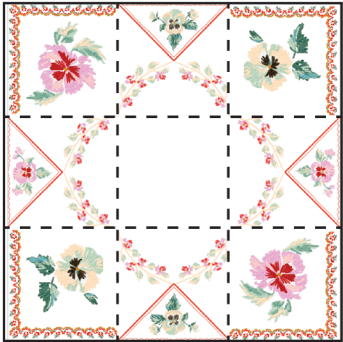
Watercolour HEART

FINE ART ILLUSTRATION & DESIGN

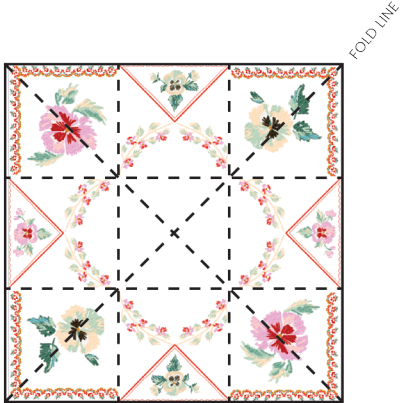
INSTRUCTIONS



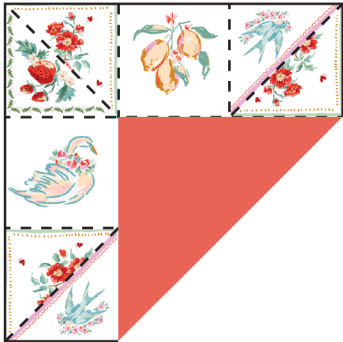
1. Valley-fold design into three equal vertical columns



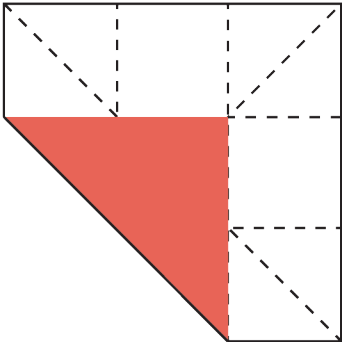
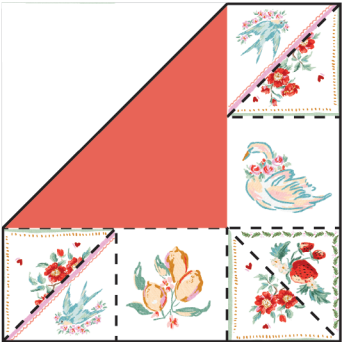
2. Valley-fold design into three equal horizontal columns



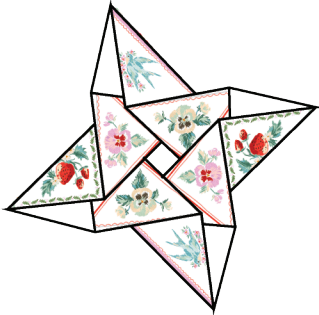
3. Valley-fold your square in half so that the corners meet and make a triangle. Do this in both directions. Then unfold.



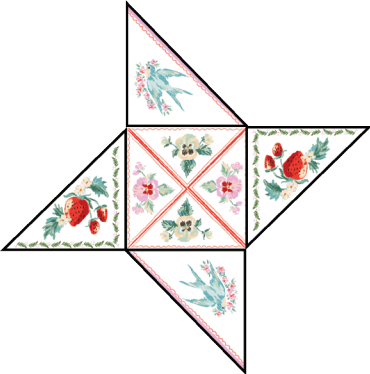
4-7. Turn paper over and Valley-fold on back design by taking each outside corner to the opposite corner of the inner center square



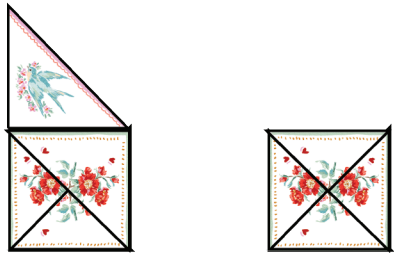
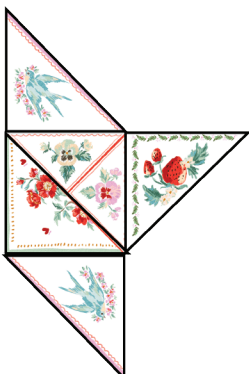
8. Turn page back over



9. Pinch opposite corners of the page and twist anti-clockwise in a pinwheel motion - this needs a bit of practice!



10-12. Going anti-clockwise, fold the arms inwards, letting them overlap.



13. Tuck the last arm in under the first.